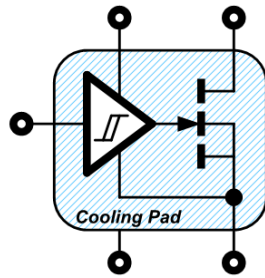


## 650 V GaNFast™ Power IC



QFN 6 x 8 mm



Simplified schematic

### 1. Features

#### GaNFast™ Power IC

- Thermally upgraded version of NV6117
- Large cooling pad
- Enhanced thermals when using CS resistor
- Monolithically-integrated gate drive
- Wide  $V_{CC}$  range (10 to 30 V)
- Programmable turn-on  $dV/dt$
- 200 V/ns  $dV/dt$  immunity
- 650 V eMode GaN FET
- Low 125 m $\Omega$  resistance
- Zero reverse recovery charge
- 2 MHz operation

#### Small, low-profile SMT QFN

- 6 x 8 mm footprint, 0.85 mm profile
- Minimized package inductance

#### Environmental

- RoHS, Pb-free, REACH-compliant

### 2. Description

The NV6127 is a thermally-enhanced version of the popular NV6117 650 V GaNFast™ power IC, optimized for high frequency and soft-switching topologies.

Monolithic integration of FET, drive and logic creates an easy-to-use 'digital-in, power-out' high-performance powertrain building block, enabling designers to create the fastest, smallest, most efficient integrated powertrain in the world.

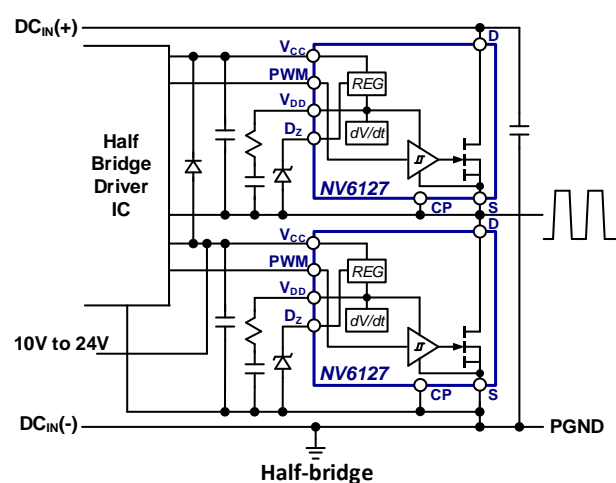
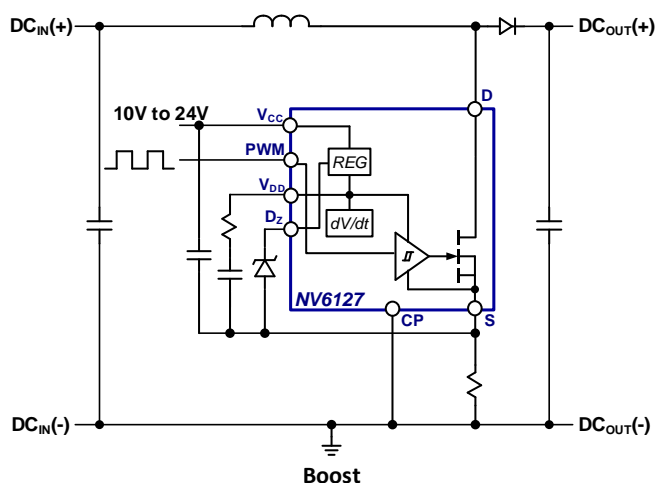
The highest  $dV/dt$  immunity, high-speed integrated drive and industry-standard low-profile, low-inductance, 6 x 8 mm SMT QFN package allow designers to exploit Navitas GaN technology with simple, quick, dependable solutions for breakthrough power density and efficiency.

Navitas' GaNFast™ power ICs extend the capabilities of traditional topologies such as flyback, half-bridge, resonant, etc. to MHz+ and enable the commercial introduction of breakthrough designs.

### 3. Topologies / Applications

- AC-DC, DC-DC, DC-AC
- Buck, boost, half bridge, full bridge
- Active Clamp Flyback, LLC resonant, Class D
- Quasi-Resonant Flyback
- Mobile fast-chargers, adapters
- Notebook adaptors
- LED lighting, solar micro-inverters
- TV / monitor, wireless power
- Server, telecom & networking SMPS

### 4. Typical Application Circuits



## 5. Table of Contents

<b>1. Features</b> .....	<b>1</b>	8.2. Normal Operating Mode .....	12
<b>2. Description</b> .....	<b>1</b>	8.3. Standby Mode .....	12
<b>3. Topologies / Applications</b> .....	<b>1</b>	8.4. Programmable Turn-on dV/dt Control .....	12
<b>4. Typical Application Circuits</b> .....	<b>1</b>	8.5. Current Sensing .....	13
<b>5. Table of Contents</b> .....	<b>2</b>	8.6. Paralleling Devices.....	13
<b>6. Specifications</b> .....	<b>3</b>	8.7. 3.3V PWM Input Circuit .....	14
6.1. Absolute Maximum Ratings <sup>(1)</sup> .....	3	8.8. PCB Layout Guidelines .....	14
6.2. Recommended Operating Conditions <sup>(3)</sup> .....	3	8.9. Recommended Component Values.....	15
6.3. ESD Ratings .....	4	8.9.1. Zener Diode Selection.....	15
6.4. Thermal Resistance .....	4	8.10. Drain-to-Source Voltage Considerations .....	16
6.5. Electrical Characteristics.....	5	<b>9. Recommended PCB Land Pattern</b> .....	<b>17</b>
6.6. Switching Waveforms .....	6	<b>10. PCB Layout Guidelines</b> .....	<b>18</b>
6.7. Characteristic Graphs .....	7	<b>11. QFN Package Outline</b> .....	<b>20</b>
<b>7. Internal Schematic, Pin Configurations and Functions</b> .....	<b>10</b>	<b>12. Tape and Reel Dimensions</b> .....	<b>21</b>
<b>8. Functional Description</b> .....	<b>11</b>	<b>13. Ordering Information</b> .....	<b>23</b>
8.1. Start Up.....	11	<b>14. Revision History</b> .....	<b>23</b>

## 6. Specifications

### 6.1. Absolute Maximum Ratings<sup>(1)</sup>

(with respect to Source (pad) unless noted)

SYMBOL	PARAMETER	MAX	UNITS
$V_{DS}$	Drain-to-Source Voltage	-7 to +650	V
$V_{TDS}$	Transient Drain-to-Source Voltage <sup>(2)</sup>	750	V
$V_{CC}$	Supply Voltage	30	V
$V_{PWM}$	PWM Input Pin Voltage	-3 to +30	V
$V_{DZ}$	$V_{DD}$ Setting Pin Voltage	6.6	V
$V_{DD}$	Drive Supply Voltage	7.2	V
$V_{CP}$	Cooling Pad Voltage	-10 to +10	V
$I_D$	Continuous Drain Current (@ $T_C = 100^\circ\text{C}$ )	12	A
$I_D$ PULSE	Pulsed Drain Current (10 $\mu\text{s}$ @ $T_J = 25^\circ\text{C}$ )	24	A
$I_D$ PULSE	Pulsed Drain Current (10 $\mu\text{s}$ @ $T_J = 125^\circ\text{C}$ )	16	A
$dV/dt$	Slew Rate on Drain-to-Source	200	V/ns
$T_J$	Operating Junction Temperature	-55 to 150	$^\circ\text{C}$
$T_{STOR}$	Storage Temperature	-55 to 150	$^\circ\text{C}$

(1) Absolute maximum ratings are stress ratings; devices subjected to stresses beyond these ratings may cause permanent damage.

(2) < 100  $\mu\text{s}$ .  $V_{TDS}$  is intended for surge rating during non-repetitive events (for example start-up, line interruption).

### 6.2. Recommended Operating Conditions<sup>(3)</sup>

SYMBOL	PARAMETER	MIN	TYP	MAX	UNITS
$V_{DZ}$	Drive Supply Set Zener Voltage <sup>(4)</sup>	5.8	6.2	6.6	V
$V_{DD}$	Drive Supply Voltage	5.5		7.0	V
$I_{DD\_EXT}$	Regulator External Load Current			3.0	mA
$R_{DD}$	Gate Drive Turn-On Current Set Resistance <sup>(5)</sup>	10	25	200	$\Omega$
$V_{PWM}$	PWM Input Pin Voltage	0	5	Min. of ( $V_{CC}$ or 20)	V
$V_{CC}$	Supply Voltage	10		24	V
$T_C$	Operating Case Temperature	-40		125	$^\circ\text{C}$

(3) Exposure to conditions beyond maximum recommended operating conditions for extended periods of time may affect device reliability.

(4) Use of Zener diode other than 6.2 V is not recommended. See Table I for recommended part numbers of 6.2 V Zener diodes.

(5)  $R_{DD}$  resistor must be used. Minimum 10 Ohm to ensure application and device robustness.

### 6.3. ESD Ratings

SYMBOL	PARAMETER	MAX	UNITS
HBM	Human Body Model (per JS-001-2014)	1,000	V
CDM	Charged Device Model (per JS-002-2014)	1,000	V

### 6.4. Thermal Resistance

SYMBOL	PARAMETER	TYP	UNITS
$R_{\theta JC}^{(6)}$	Junction-to-Case	1.5	°C/W
$R_{\theta JA}^{(6)}$	Junction-to-Ambient	40	°C/W

(6)  $R_{\theta}$  measured on DUT mounted on 1 square inch 2 oz Cu (FR4 PCB)

## 6.5. Electrical Characteristics

Typical conditions:  $V_{DS} = 400\text{ V}$ ,  $V_{CC} = 15\text{ V}$ ,  $V_{DZ} = 6.2\text{ V}$ ,  $F_{SW} = 1\text{ MHz}$ ,  $T_{AMB} = 25\text{ °C}$ ,  $I_D = 6\text{ A}$ ,  $R_{DD} = 10\text{ }\Omega$  (or specified)

SYMBOL	PARAMETER	MIN	TYP	MAX	UNITS	CONDITIONS
<b><math>V_{CC}</math> Supply Characteristics</b>						
$I_{QCC}$	$V_{CC}$ Quiescent Current		0.85	1.5	mA	$V_{PWM} = 0\text{ V}$
$I_{QCC-SW}$	$V_{CC}$ Operating Current		2.85		mA	$F_{SW} = 1\text{ MHz}$ , $V_{DS} = \text{Open}$
<b>Low-Side Logic Input Characteristics</b>						
$V_{PVMH}$	Input Logic High Threshold (rising edge)			4	V	
$V_{PVML}$	Input Logic Low Threshold (falling edge)	1			V	
$V_{I-HYS}$	Input Logic Hysteresis		0.5		V	
$T_{ON}$	Turn-on Propagation Delay		11		ns	Fig.1, Fig.2
$T_{OFF}$	Turn-off Propagation Delay		9		ns	Fig.1, Fig.2
$T_R$	Drain rise time		6		ns	Fig.1, Fig.2
$T_F$	Drain fall time		3		ns	Fig.1, Fig.2
<b>Switching Characteristics</b>						
$F_{SW}$	Switching Frequency			2	MHz	
$t_{PW}$	Pulse width	0.02		1000	$\mu\text{s}$	
<b>GaN FET Characteristics</b>						
$I_{DSS}$	Drain-Source Leakage Current		0.3	25	$\mu\text{A}$	$V_{DS} = 650\text{ V}$ , $V_{PVM} = 0\text{ V}$
$I_{DSS}$	Drain-Source Leakage Current		10	50	$\mu\text{A}$	$V_{DS} = 650\text{ V}$ , $V_{PVM} = 0\text{ V}$ , $T_C = 125\text{ °C}$
$R_{DS(ON)}$	Drain-Source Resistance		125	180	m $\Omega$	$V_{PVM} = 6\text{ V}$ , $I_D = 6\text{ A}$
$R_{DS(ON)}$	Drain-Source Resistance		259		m $\Omega$	$V_{PVM} = 6\text{ V}$ , $I_D = 6\text{ A}$ , $T_C = 125\text{ °C}$
$V_{SD}$	Source-Drain Reverse Voltage		3.2	5	V	$V_{PVM} = 0\text{ V}$ , $I_{SD} = 6\text{ A}$
$Q_{OSS}$	Output Charge		27		nC	$V_{DS} = 400\text{ V}$ , $V_{PVM} = 0\text{ V}$
$Q_{RR}$	Reverse Recovery Charge		0		nC	
$C_{OSS}$	Output Capacitance		27		pF	$V_{DS} = 400\text{ V}$ , $V_{PVM} = 0\text{ V}$
$C_{O(er)}^{(7)}$	Effective Output Capacitance, Energy Related		41		pF	$V_{DS} = 400\text{ V}$ , $V_{PVM} = 0\text{ V}$
$C_{O(tr)}^{(8)}$	Effective Output Capacitance, Time Related		67		pF	$V_{DS} = 400\text{ V}$ , $V_{PVM} = 0\text{ V}$

(7)  $C_{O(er)}$  is a fixed capacitance that gives the same stored energy as  $C_{OSS}$  while  $V_{DS}$  is rising from 0 to 400 V

(8)  $C_{O(tr)}$  is a fixed capacitance that gives the same charging time as  $C_{OSS}$  while  $V_{DS}$  is rising from 0 to 400 V

## 6.6. Switching Waveforms

( $T_C = 25\text{ }^{\circ}\text{C}$  unless otherwise specified)

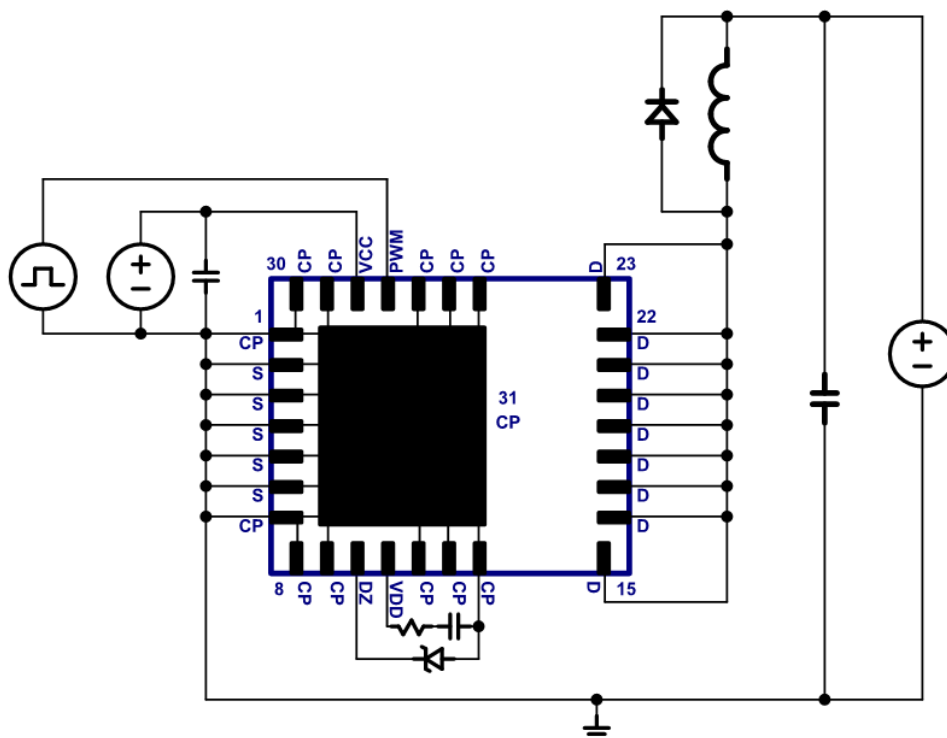


Fig. 1. Inductive switching circuit

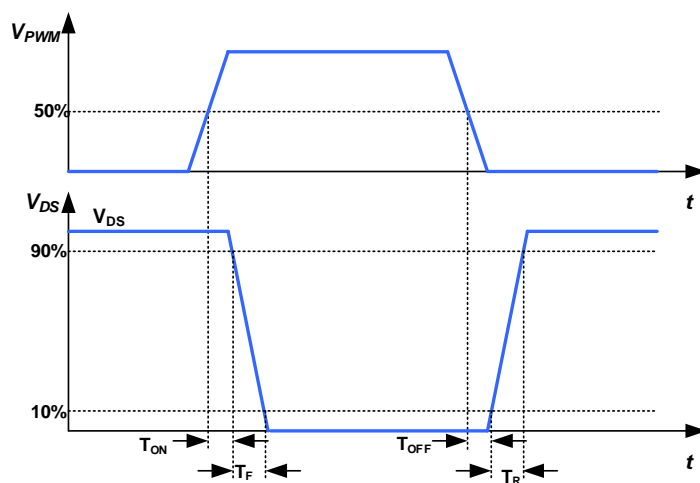


Fig. 2. Propagation delay and rise/fall time definitions

## 6.7. Characteristic Graphs

(GaN FET,  $T_C = 25^\circ\text{C}$  unless otherwise specified)

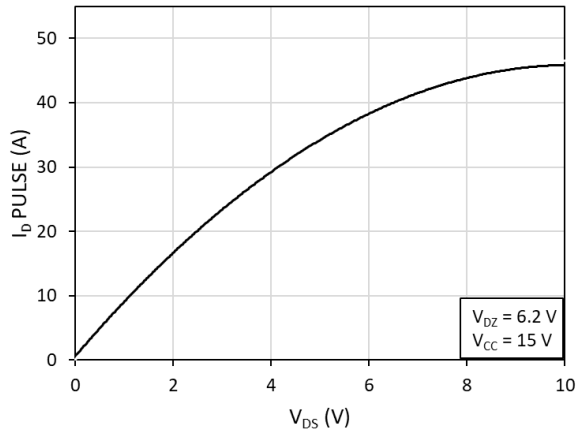


Fig. 3. Pulsed Drain current ( $I_D$  PULSE) vs. drain-to-source voltage ( $V_{DS}$ ) at  $T = 25^\circ\text{C}$

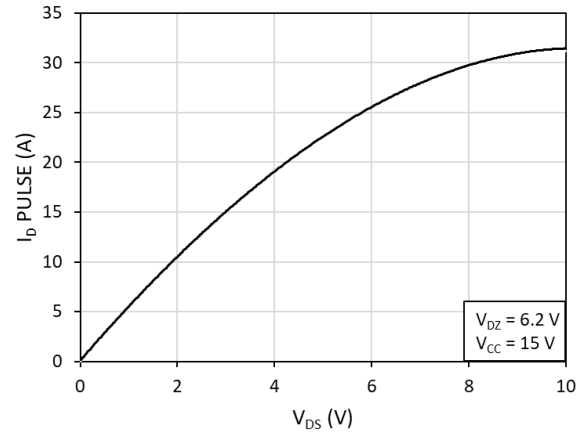


Fig. 4. Pulsed Drain current ( $I_D$  PULSE) vs. drain-to-source voltage ( $V_{DS}$ ) at  $T = 125^\circ\text{C}$

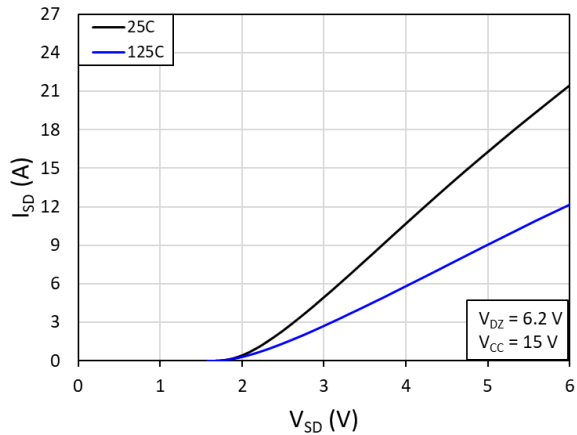


Fig. 5. Source-to-drain reverse conduction voltage

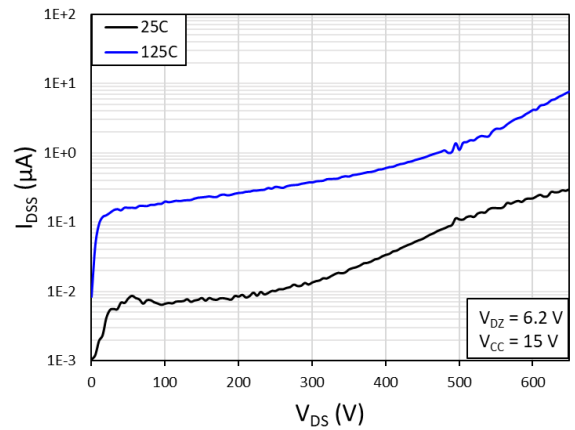


Fig. 6. Drain-to-source leakage current ( $I_{DSS}$ ) vs. drain-to-source voltage ( $V_{DS}$ )

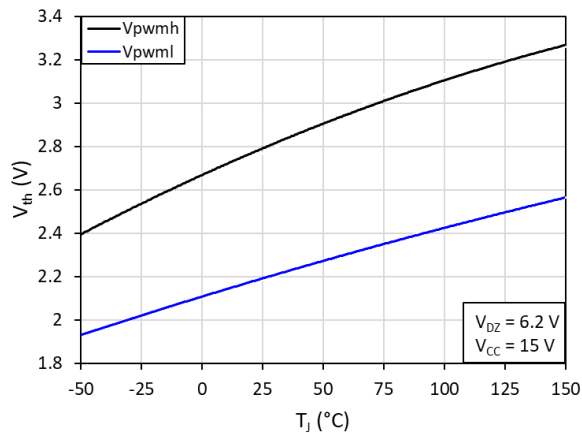


Fig. 7.  $V_{PWMH}$  and  $V_{PWML}$  vs. junction temperature ( $T_J$ )

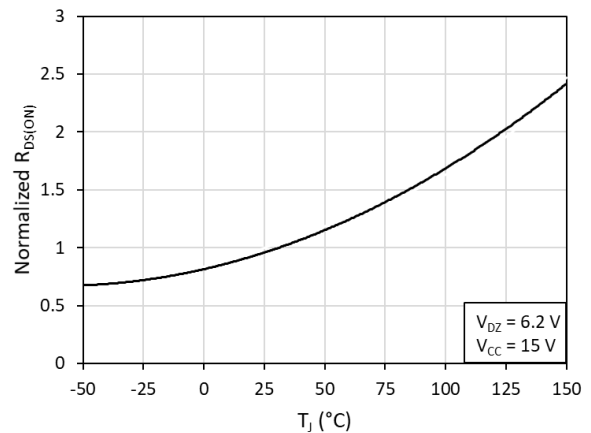


Fig. 8. Normalized on-resistance ( $R_{DS(ON)}$ ) vs. junction temperature ( $T_J$ )

## Characteristic Graphs (Cont.)

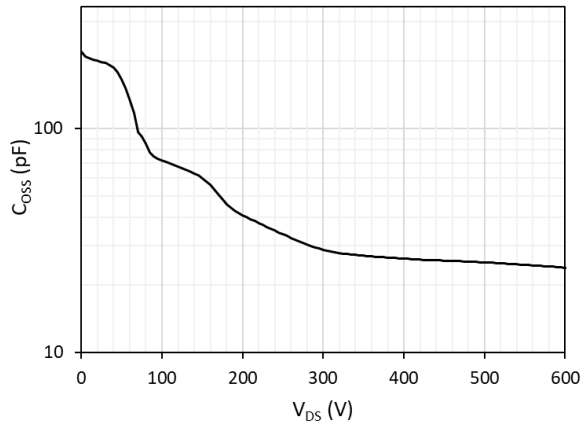


Fig. 9. Output capacitance ( $C_{OSS}$ ) vs. drain-to-source voltage ( $V_{DS}$ )

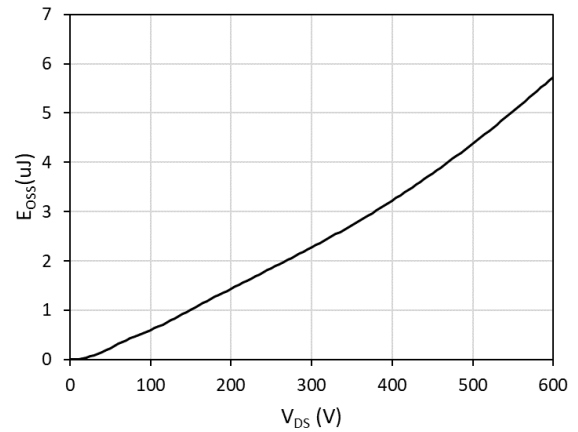


Fig. 10. Energy stored in output capacitance ( $E_{OSS}$ ) vs. drain-to-source voltage ( $V_{DS}$ )

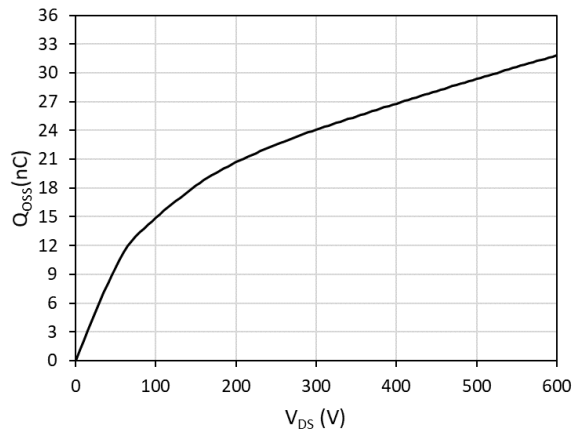


Fig. 11. Charge stored in output capacitance ( $Q_{OSS}$ ) vs. drain-to-source voltage ( $V_{DS}$ )

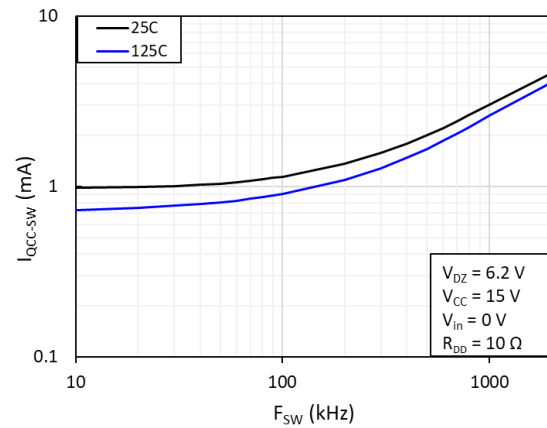


Fig. 12.  $V_{CC}$  operating current ( $I_{QCC-SW}$ ) vs. operating frequency ( $F_{SW}$ )

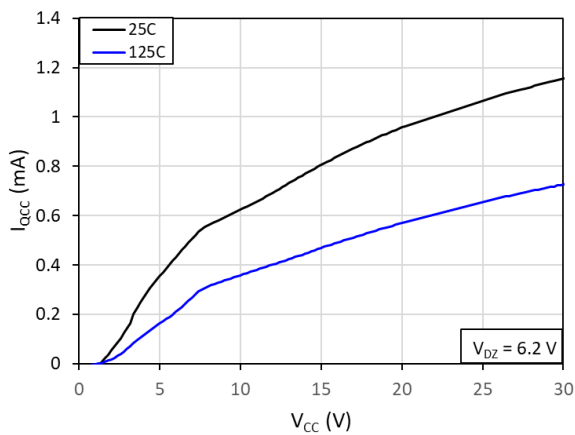


Fig. 13.  $V_{CC}$  quiescent current ( $I_{QCC}$ ) vs. supply voltage ( $V_{CC}$ )

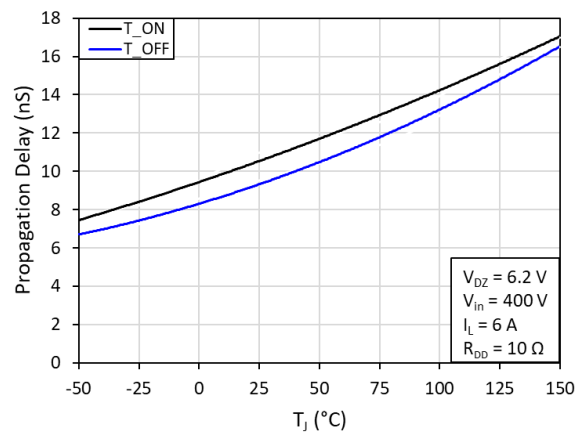


Fig. 14. Propagation delay ( $T_{ON}$  and  $T_{OFF}$ ) vs. junction temperature ( $T_J$ )



## Characteristic Graphs (Cont.)

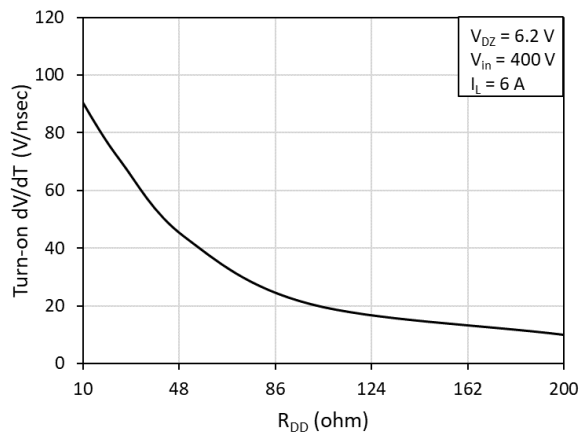


Fig. 15. Slew rate ( $dV/dt$ ) vs. gate drive turn-on current set resistance ( $R_{DD}$ ) at  $T = 25$  °C

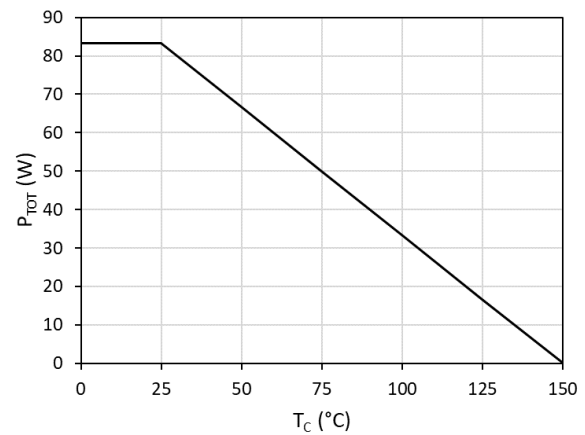


Fig. 16. Power dissipation ( $P_{TOT}$ ) vs. case temperature ( $T_C$ )

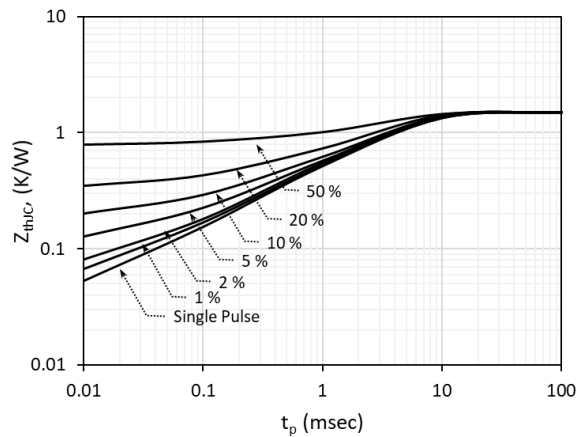
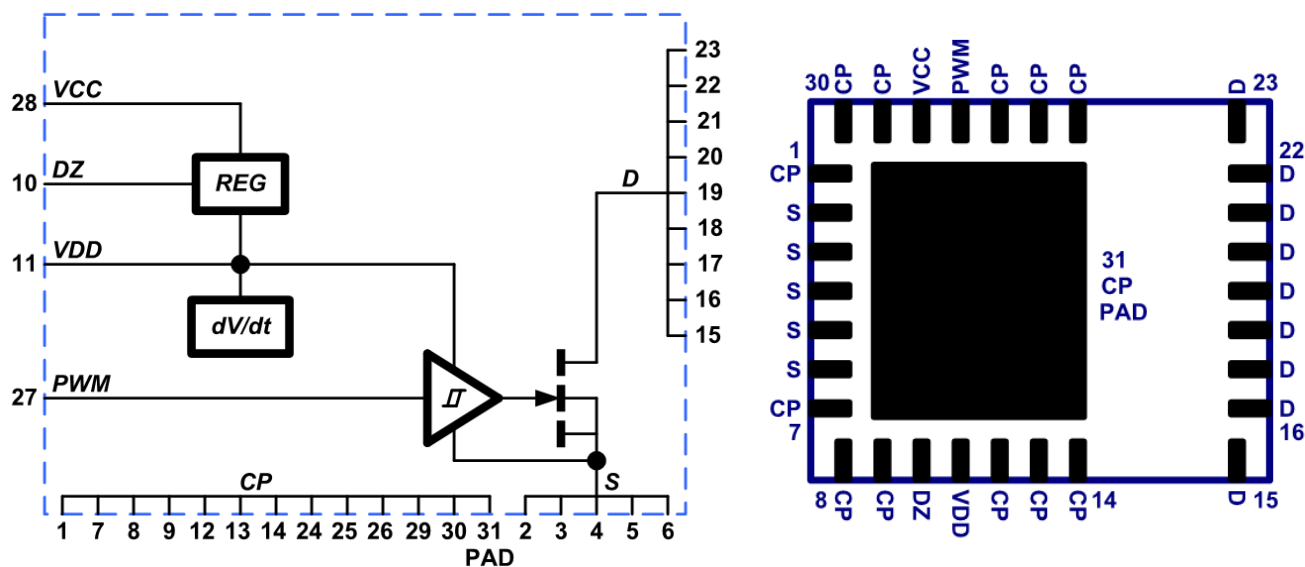


Fig. 17. Max. thermal transient impedance ( $Z_{thJC}$ ) vs. pulse width ( $t_p$ )

## 7. Internal Schematic, Pin Configurations and Functions



### Package Top View

Pin		I/O <sup>(1)</sup>	Description
Number	Symbol		
1,7,8,9,12,13,14,24,25,26,29,30,31	CP	T	Metal cooling pad on bottom of package for thermal management. <b>CP must be connected to Source or circuit PGND. Do not leave CP unconnected or floating!</b>
2,3,4,5,6	S	O, G	Source of power FET & GaN IC supply ground.
10	D <sub>Z</sub>	I	Gate drive supply voltage set pin (connect 6.2 V Zener to GND).
11	V <sub>DD</sub>	I	Gate drive supply voltage. Gate drive turn-on current set pin (using R <sub>DD</sub> ).
27	PWM	I	PWM input
28	V <sub>CC</sub>	P	Supply voltage (10V to 24V)
15,16,17,18,19,20,21,22,23	D	P	Drain of power FET

(1) *I* = Input, *O* = Output, *P* = Power, *G* = GaN IC Ground, *T* = Thermal

## 8. Functional Description

The following functional description contains additional information regarding the IC operating modes and pin functionality.

### 8.1. Start Up

When the  $V_{CC}$  supply is first applied to the GaNFast power IC, care should be taken such that the  $V_{DD}$  and  $D_z$  pins are up at their correct voltage levels before the PWM input signal starts. The  $V_{DD}$  pin ramp up time is determined by the internal regulator current at this pin and the external  $C_{VDD}$  capacitor. Also, since the  $D_z$  pin voltage sets the  $V_{DD}$  voltage level, the  $V_{DD}$  pin will ramp up together with the  $D_z$  pin (Fig. 18).

For half-bridge configurations, it is important that the  $V_{CC}$  supply, the  $D_z$  pin, and the  $V_{DD}$  supply of the high-side GaNFast power IC are all charged up to their proper levels before the first high-side PWM pulses start. For LLC applications, a long on-time PWM pulse to the low-side ( $> 10 \mu s$ ) is typically provided by the LLC controller to allow the supply pins of the high-side GaNFast power IC to charge up (through the external bootstrap diode) to their correct levels before the first high-side PWM pulses start (Fig. 19).

For active clamp flyback (ACF) applications, the half-bridge must be ready very quickly due to the soft-start mode of the ACF controller. When the first few PWM pulses are generated by the ACF controller, the high-side supply pins of the GaNFast power IC will require a few low-side pulses to charge up (through the external bootstrap diode) before the high-side starts to switch (Fig. 20).

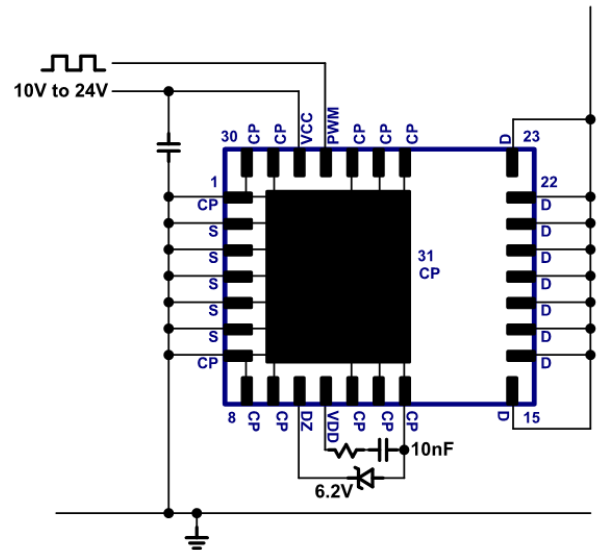


Fig. 18. Start-up circuit

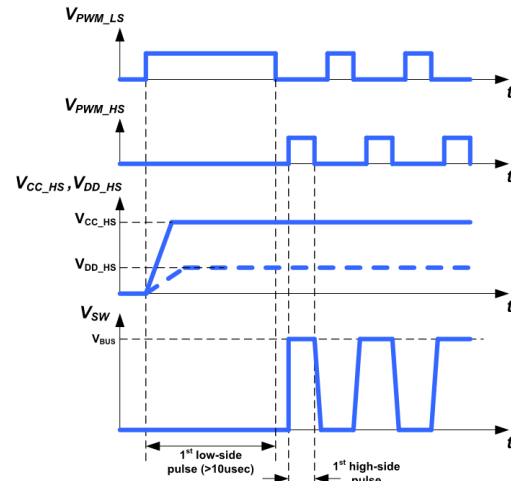


Fig. 19. LLC half-bridge start-up timing diagram

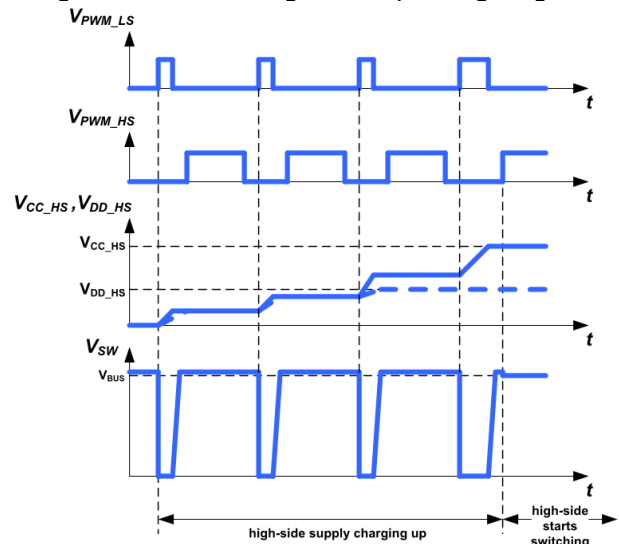


Fig. 20. ACF half-bridge start-up timing diagram

## 8.2. Normal Operating Mode

During Normal Operating Mode, all of the internal circuit blocks are active.  $V_{CC}$  is operating within the recommended range of 10 V to 24 V, the  $V_{DD}$  pin is at the voltage set by the Zener diode at the  $D_Z$  pin (6.2 V), and the internal gate drive and power FET are both enabled. The external PWM signal at the PWM pin determines the frequency and duty-cycle of the internal gate of the power FET. As the PWM voltage toggles above and below the rising and falling input thresholds (4 V and 1 V), the internal gate of the power FET toggles on and off between  $V_{DD}$  and 0 V (Fig. 21). The drain of the power FET then toggles between the source voltage (typically power ground) and a higher voltage level (650 V max), depending on the external power conversion circuit topology.

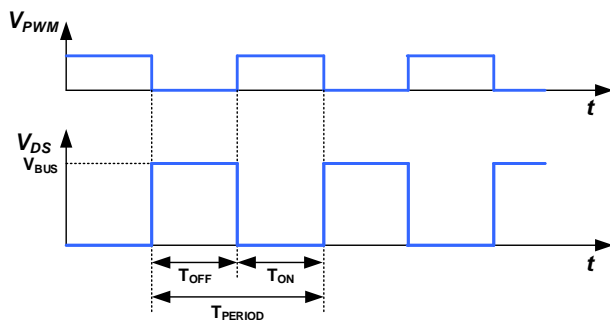


Fig. 21. Normal operating mode timing diagram

## 8.3. Standby Mode

For applications where a low standby power is required, an external series cut-off circuit (Fig. 22) can be used to disconnect  $V_{CC}$  of the GaNFast power IC from the main  $V_{CC}$  supply of the power supply. This will reduce  $V_{CC}$  current consumption when the converter is in burst mode during light-load or open load conditions. The  $V_{CC}$  cut-off circuit consists of a series PMOS FET that is turned on and off with a pull-down NMOS FET. The gate of the NMOS is controlled by an external ENABLE signal that should be provided by the main controller of the power supply. The capacitor value at the  $V_{CC}$  pin should then be selected according to the desired start-up speed of the GaNFast power IC each time the ENABLE signal toggles high. A 22 nF capacitor at  $V_{CC}$ , for example, will give a typical start-up time of approximately 2  $\mu$ s. An additional 200 k $\Omega$  resistor is placed across the PMOS cut-off FET to provide a small  $V_{CC}$  voltage level for proper start-up.

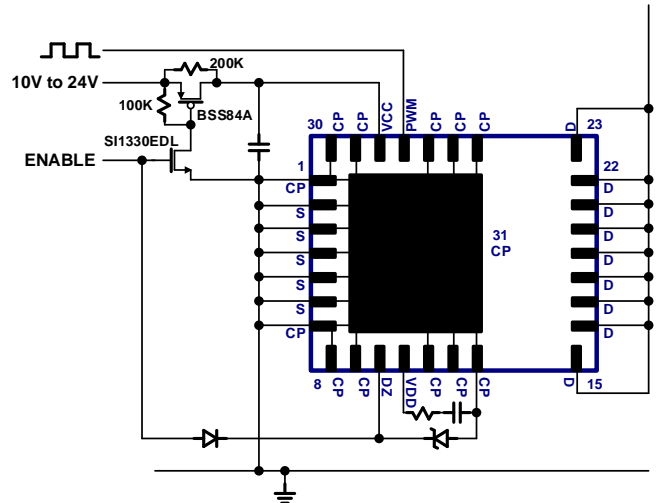


Fig. 22. Standby mode  $V_{CC}$  cut-off circuit

## 8.4. Programmable Turn-on dV/dt Control

During first start-up pulses or during hard-switching conditions, it is desirable to limit the slew rate ( $dV/dt$ ) of the drain of the power FET during turn-on. This is necessary to reduce EMI or reduce circuit switching noise. To program the turn-on  $dV/dt$  rate of the internal power FET, a resistor ( $R_{DD}$ ) is placed in between the  $V_{DD}$  capacitor and the  $V_{DD}$  pin. This resistor ( $R_{DD}$ ) sets the turn-on current of the internal gate driver and therefore sets the turn-on falling edge  $dV/dt$  rate of the drain of the power FET (Fig. 23). A typical turn-on slew-rate change with respect to  $R_{DD}$  is shown in Fig. 15.

**Minimum 10  $\Omega$   $R_{DD}$  is required.**

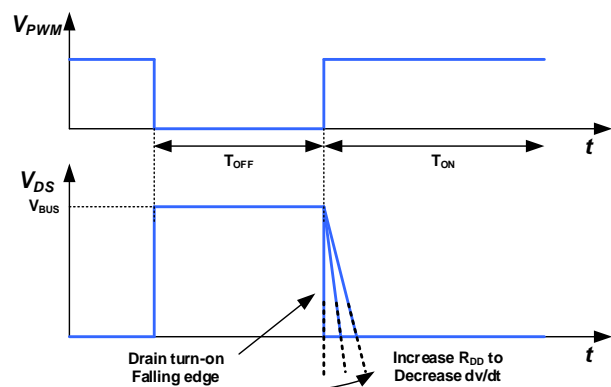


Fig. 23. Turn-on  $dV/dt$  slew rate control

## 8.5. Current Sensing

For many applications it is necessary to sense the cycle-by-cycle current flowing through the power FET. To sense the current flowing through the GaNFast power IC, a standard current-sensing resistor can be placed in between the source and power ground (Fig. 24). In this configuration, all of the components around the GaNFast power IC ( $C_{VCC}$ ,  $C_{VDD}$ ,  $D_Z$ , etc.) should be grounded with a single connection at the source. Also, an additional RC filter can be inserted between the PWM signal and the PWM pin (100  $\Omega$ , 100 pF typical). This filter is necessary to prevent false triggering due to high-frequency voltage spikes occurring at the source node due to external parasitic inductance from the source PCB trace or the current-sensing resistor itself. For increased cooling pad PCB copper area it may be desired to connect CP to the circuit PGND. Fig. 24 shows the components around the GaNFast power IC grounded at the source pins (S) and CP connected to PGND. This allows for all CP pins and CP pad to be connected to a large and continuous thermal copper area without being obstructed by the current sensing resistor. **CP must be connected to source (S) or circuit PGND!**

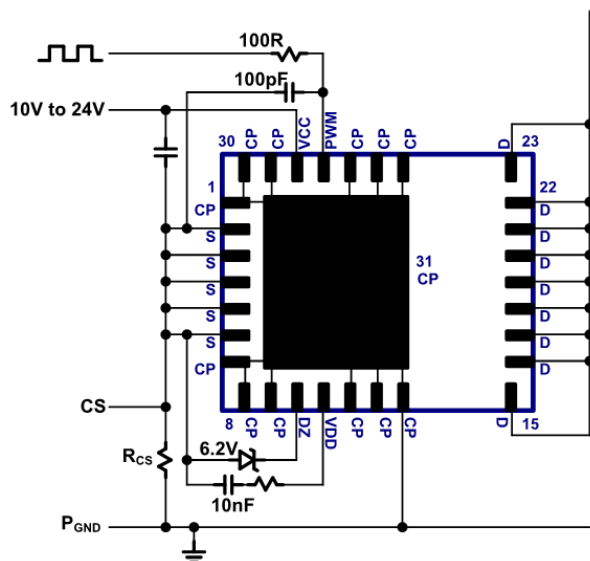


Fig. 24. Current sensing circuit

## 8.6. Paralleling Devices

For some applications it is desirable to parallel ICs in order to reduce conduction losses and temperatures. Two GaNFast power ICs can be connected in parallel in a PFC boost application working in boundary-conduction mode (BCM) only. The parallel configuration for two GaNFast power ICs is shown in Fig. 25. The paired pins that are connected together include the drain pins (D), the source pins (S), the  $V_{CC}$  pins, the PWM pins, and the  $D_Z$ . A single  $D_Z$  diode can be shared by both ICs. The  $V_{DD}$  pins are not connected together and require separate  $V_{DD}$  supply capacitors ( $C_{VDD1}$ ,  $C_{VDD2}$ ) and separate turn-on current set resistors ( $R_{DD1}$ ,  $R_{DD2}$ ). Each IC should have its own local  $V_{CC}$  supply filter capacitor ( $C_{VCC1}$ ,  $C_{VCC2}$ ). The PWM pins can have a single filter resistor ( $R_{PWM}$ ) but separate filter capacitors ( $C_{PWM1}$ ,  $C_{PWM2}$ ) should be placed at the PWM pin of each IC. When designing the PCB layout for the two paralleled ICs, the drain and source connections should be made as symmetrical as possible two avoid any parasitic inductance or capacitance mismatch.

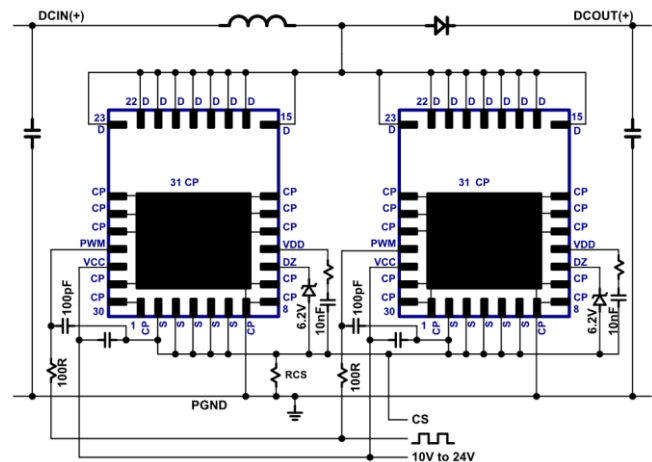


Fig. 25. Boost schematic using two parallel ICs



## 8.9. Recommended Component Values

The following table (Table I) shows the recommended component values for the external filter capacitors, Zener diode, and  $R_{DD}$  connected to the pins of the GaNFast power IC. These components should be placed as close as possible to the IC. Please see PCB Layout guidelines for more information. The Zener diode at the  $D_z$  pin should be a low-current type with a flat knee, and the min/max limits must be followed.  $R_{DD}$  must be a minimum of 10  $\Omega$  to ensure application and device robustness.

SYM	DESCRIPTION	PART NO.	SUPPLIER	MIN	TYP	MAX	UNITS
$C_{VCC}$	Maximum $V_{CC}$ supply capacitor				0.1		$\mu F$
$C_{VDD}$	$V_{DD}$ supply capacitor				0.01		$\mu F$
$R_{DD}$	Gate drive turn-on current set resistor			10	25	200	$\Omega$
$D_z$	$V_{DD}$ set Zener diode ( $D_z$ pin)	BZT52B6V2 RHG	Taiwan Semiconductor Corporation	5.8	6.2	6.6	V
		MM3Z6V2ST1G	ON-Semiconductor				
		PDZ6.2B.115	Nexperia (NXP)				
		PLVA662A.215	Nexperia (NXP)				
		LM3Z6V2T1	Leshan Radio Company				
$R_{PWM}$	PWM filter resistor				100		$\Omega$
$C_{PWM}$	PWM filter capacitor				100		pF

Table I. Recommended component values.

### 8.9.1. Zener Diode Selection

The Zener voltage is a critical parameter that sets the internal reference for gate drive voltage and other circuitry. The Zener diode needs to be selected such that the voltage on the  $D_z$  pin is within recommended operating conditions (5.8 V to 6.6 V) across operating temperature (-40°C to 125°C) and bias current (10  $\mu A$  to 1 mA). To ensure effective operation, the current vs. voltage characteristics of the Zener diode should be measured down to 10  $\mu A$  to ensure flat characteristics across the current operating range (10  $\mu A$  to 1 mA). The recommended part numbers (Table I) meet these requirements. If the Zener selected by user does not ensure that the voltage on the  $D_z$  pin is always within the recommended operating range, the functionality and reliability of the GaNFast power IC can be impacted. An external resistor (~47 k $\Omega$ ) between  $V_{CC}$  and  $D_z$  (Fig. 27) can improve Zener voltage stability by adding bias current to the  $D_z$  pin to ensure the voltage on the  $D_z$  pin is always within the recommended operating range. This will add ~200  $\mu A$  of quiescent current.

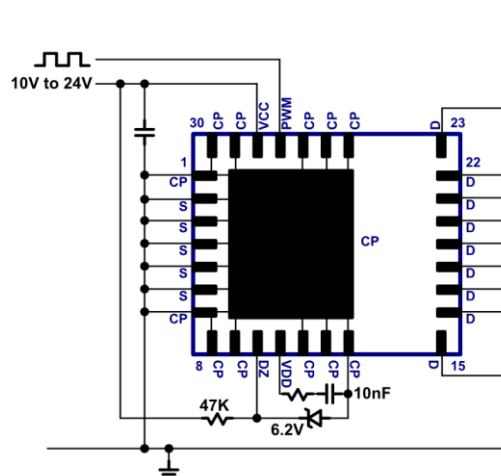


Fig. 27. Increasing Zener bias current for stable Zener voltage

## 8.10. Drain-to-Source Voltage Considerations

For single ended topologies, such as quasi-resonant (QR) flyback, the drain-to-source voltage ( $V_{DS}$ ) of the GaN Power IC should be carefully designed in order to ensure there is sufficient derating to provide exceptional quality and long-term reliability. The different voltage stress levels found in a typical QR flyback topology can be analyzed using Fig. 28 as a reference. When the device is switched off each cycle, the energy stored in the transformer magnetizing and leakage inductances will cause the  $V_{DS}$  to spike to the level of  $V_{SPIKE}$ . The clamp circuit of the QR system should be designed such that  $V_{SPIKE}$  stays below the Absolute Maximum rated  $V_{DS}$  of 650 V on a cycle-by-cycle basis in continuous operation. Following the dissipation of the spike energy due to the leakage inductance, the device  $V_{DS}$  will be determined by the addition of the bus voltage (rectified AC input voltage) and the transformer reflected voltage which is defined in Fig. 28 as the  $V_{DS-OFF}$ . To ensure sufficient design margin and long-term reliability, it is recommended to design the system such that  $V_{DS-OFF}$  follows a typical derating of 80% from absolute maximum voltage. Finally, the transient drain-to-source voltage rating ( $V_{TDS}$ ) is provided in order to provide a margin for events that could occur on a non-repetitive basis, such as line surge due to lightning strikes.  $V_{TDS}$  ensures excellent device robustness provided any non-repetitive drain-to-source voltages are maintained less than 750 V. For half-bridge based topologies, such as LLC or PFC,  $V_{DS}$  voltage is clamped to the bus voltage.  $V_{DS}$  should be designed such that it meets the  $V_{DS-OFF}$  derating guideline. The  $V_{TDS}$  of 750 V can also be used for non-repetitive events such as lightning surge.

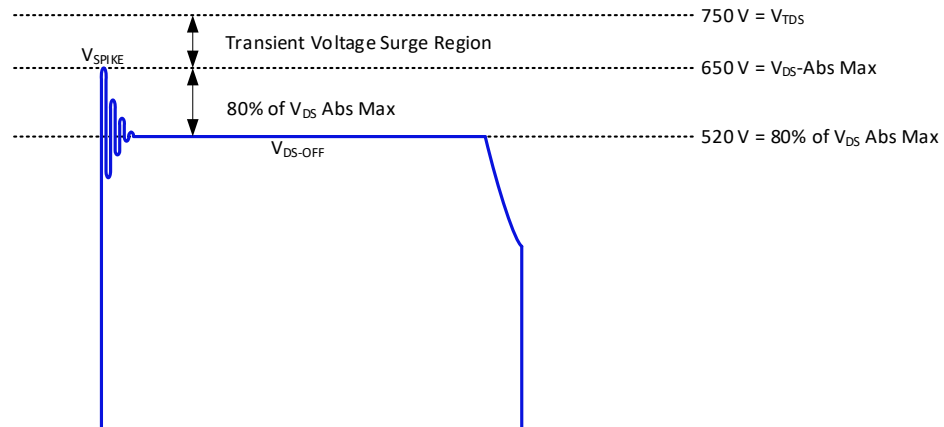
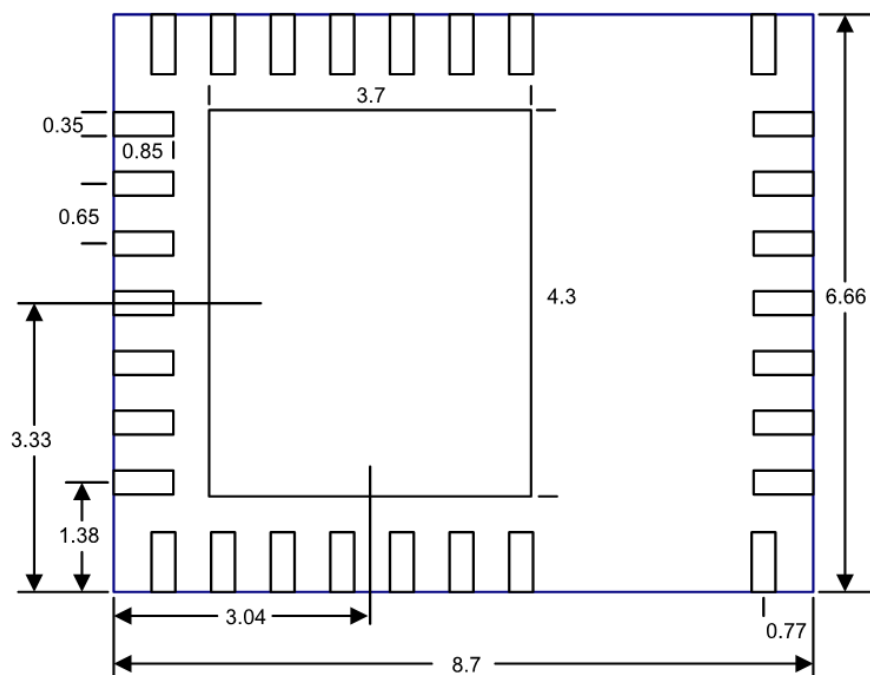


Fig. 28. QR flyback drain-to-source voltage stress diagram



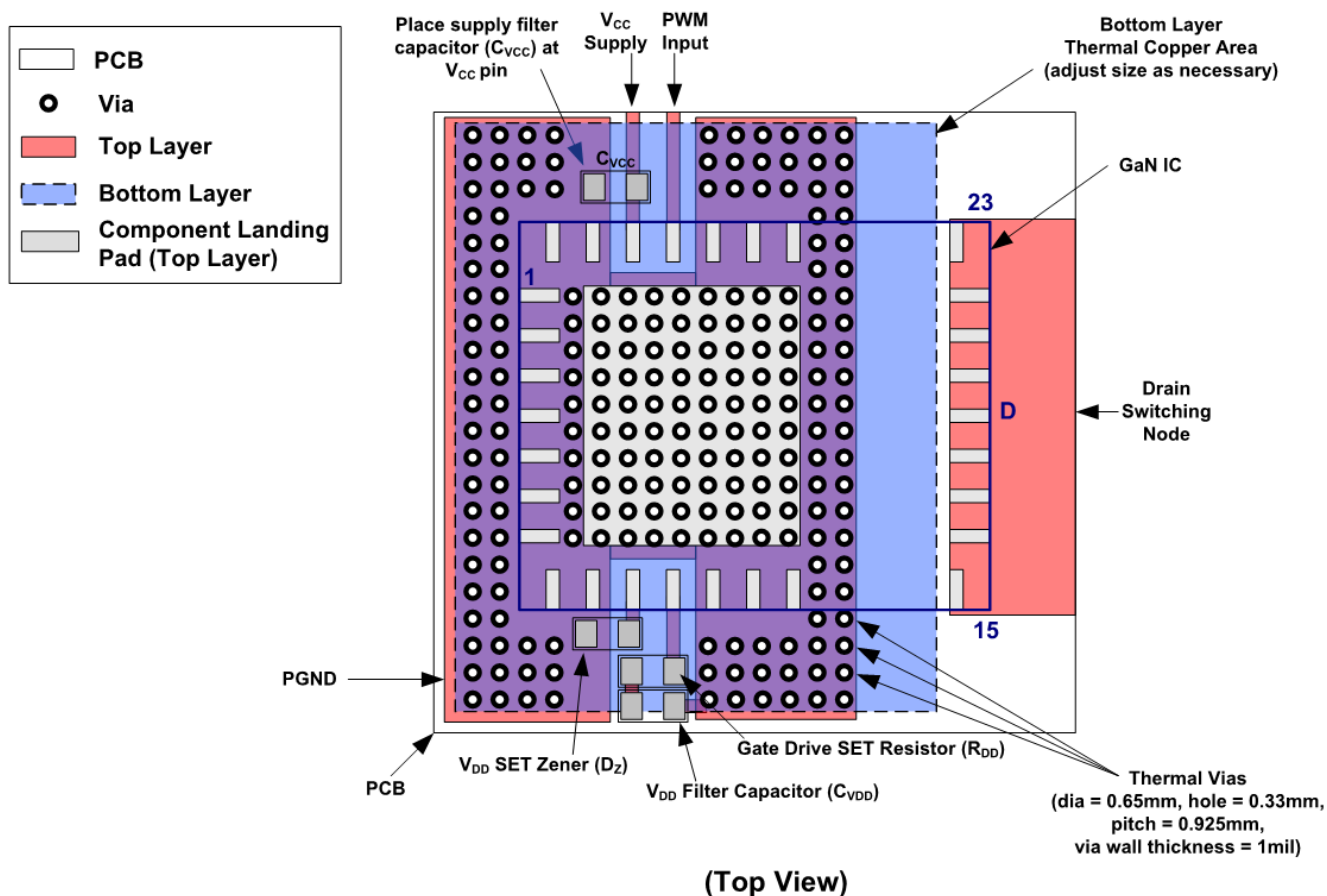
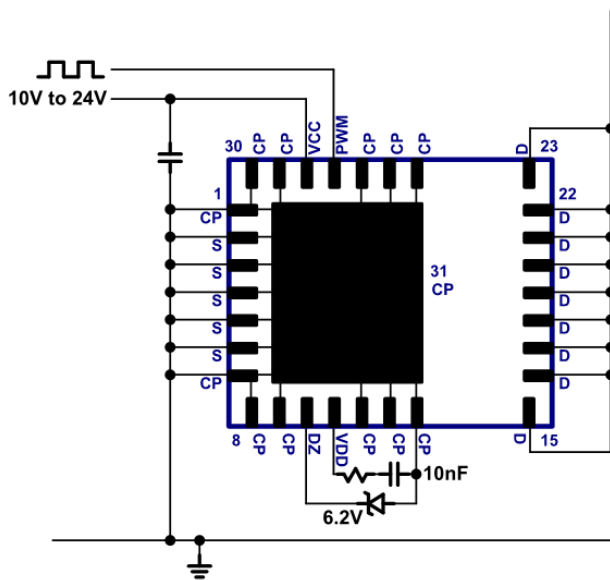
## 9. Recommended PCB Land Pattern



All dimensions are in mm

## 10. PCB Layout Guidelines

Without CS Resistor:

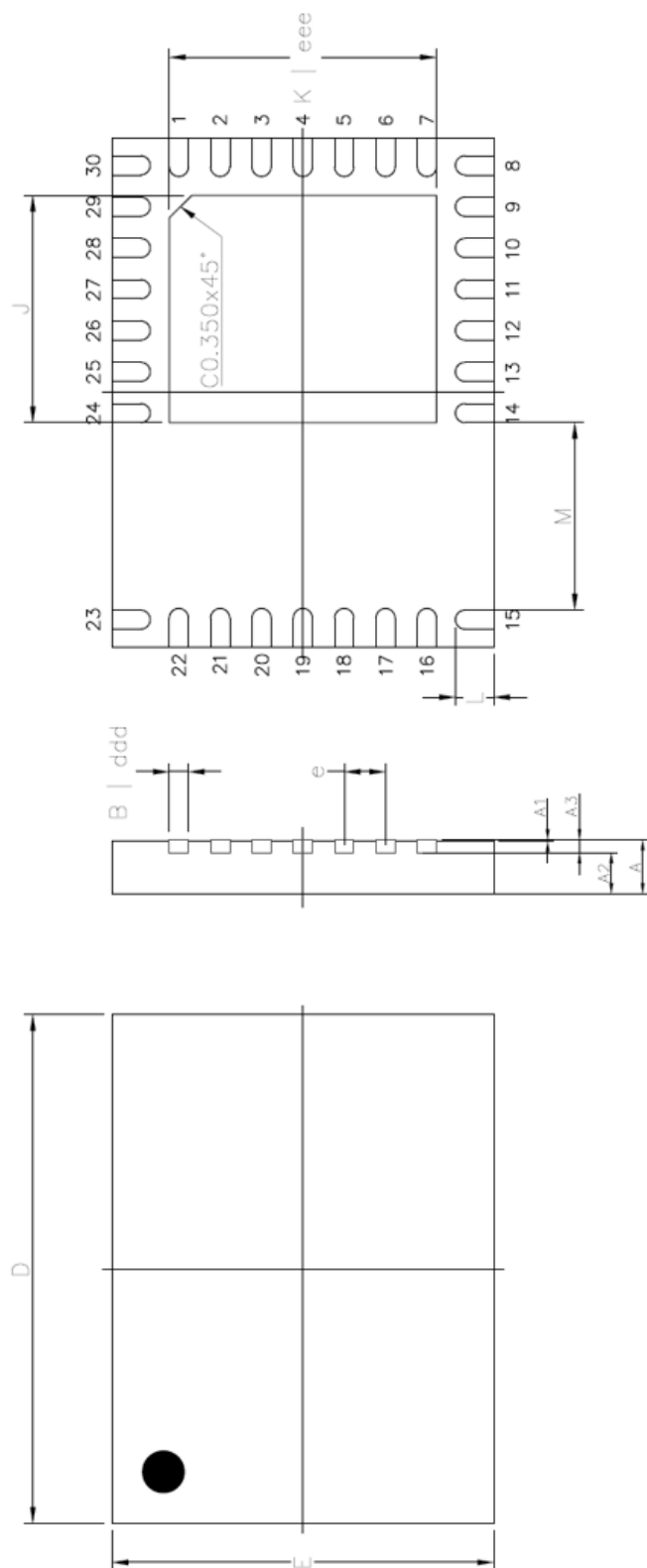


The diagram shows a 31-bit counter IC with the following connections:

- Pin 1 (CP):** Connected to a 10V to 24V input through a 100R resistor and a 100pF capacitor.
- Pin 2 (S):** Connected to a 6.2V diode.
- Pin 3 (S):** Connected to a 10nF capacitor.
- Pin 4 (S):** Connected to a 10nF capacitor.
- Pin 5 (S):** Connected to a 10nF capacitor.
- Pin 6 (S):** Connected to a 10nF capacitor.
- Pin 7 (S):** Connected to a 10nF capacitor.
- Pin 8 (Q):** Connected to a 10nF capacitor.
- Pin 9 (Q):** Connected to a 10nF capacitor.
- Pin 10 (Q):** Connected to a 10nF capacitor.
- Pin 11 (Q):** Connected to a 10nF capacitor.
- Pin 12 (Q):** Connected to a 10nF capacitor.
- Pin 13 (Q):** Connected to a 10nF capacitor.
- Pin 14 (Q):** Connected to a 10nF capacitor.
- Pin 15 (D):** Connected to a 10nF capacitor.
- Pin 16 (D):** Connected to a 10nF capacitor.
- Pin 17 (D):** Connected to a 10nF capacitor.
- Pin 18 (D):** Connected to a 10nF capacitor.
- Pin 19 (D):** Connected to a 10nF capacitor.
- Pin 20 (D):** Connected to a 10nF capacitor.
- Pin 21 (D):** Connected to a 10nF capacitor.
- Pin 22 (D):** Connected to a 10nF capacitor.
- Pin 23 (D):** Connected to a 10nF capacitor.
- Pin 24 (D):** Connected to a 10nF capacitor.
- Pin 25 (D):** Connected to a 10nF capacitor.
- Pin 26 (D):** Connected to a 10nF capacitor.
- Pin 27 (D):** Connected to a 10nF capacitor.
- Pin 28 (D):** Connected to a 10nF capacitor.
- Pin 29 (D):** Connected to a 10nF capacitor.
- Pin 30 (D):** Connected to a 10nF capacitor.
- Pin 31 (D):** Connected to a 10nF capacitor.

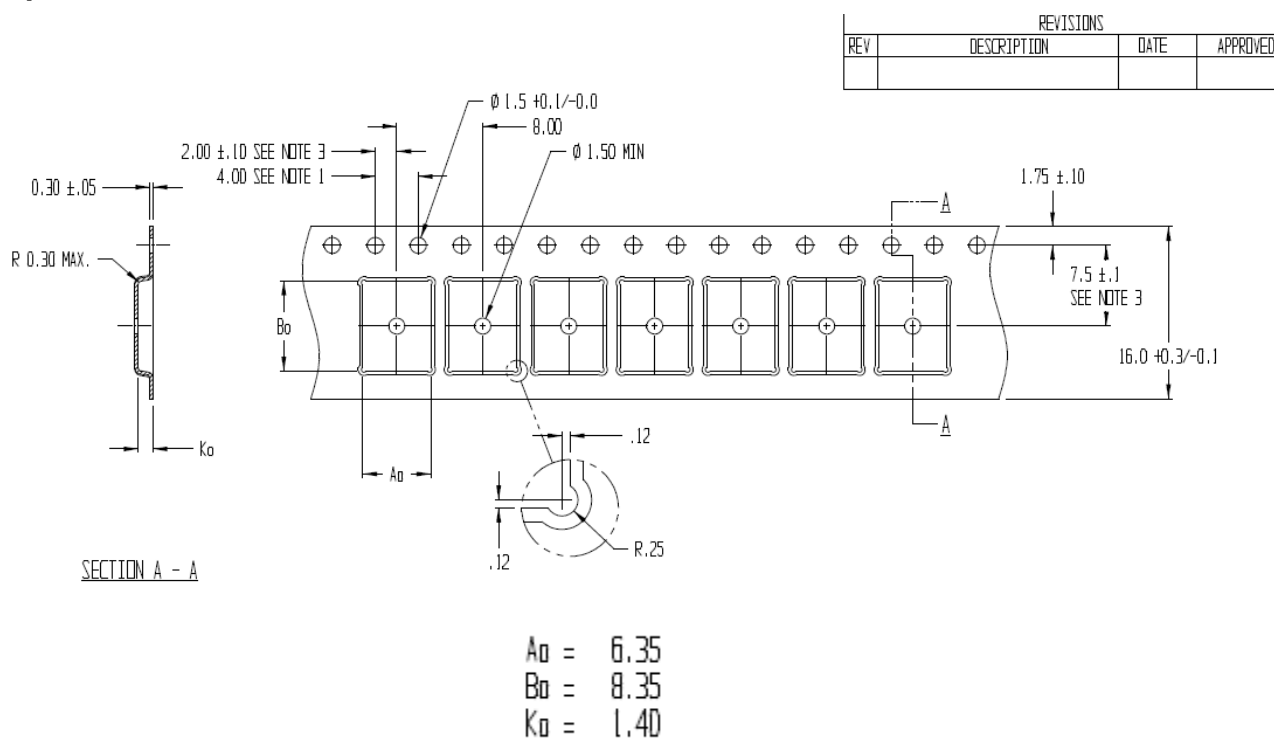


## 11. QFN Package Outline



	SYMBOL	MIN	NOM	MAX		SYMBOL	MIN	NOM	MAX		
TOTAL THICKNESS	A	0.8	0.85	0.9	X	J	3.475	3.575	3.675		
	A1	0	0.02	0.05		Y	K	4.1	4.2	4.3	
STAND OFF	A2	---	0.65	---	LEAD LENGTH	L	0.625	0.675	0.725		
MOLD THICKNESS	A3	0.203 REF					HIGH VOLTAGE SPACING	M	2.85	2.95	3.05
L/F THICKNESS	B	0.4	0.45	0.5	PACKAGE EDGE TOLERANCE	aaa			0.1		
LEAD WIDTH	D	8 BSC					MOLD FLATNESS	bbb	0.1		
	Y	6 BSC							COPLANARITY	ccc	0.08
BODY SIZE	E	0.65 BSC			LEAD OFFSET	ddd	0.1				
	e	0.65 BSC					EXPOSED PAD OFFSET	eee	0.1		
LEAD PITCH											

## 12. Tape and Reel Dimensions



ATTENTION  
ORIENT PEACORNS  
FOR MAGNETIC  
ELECTROSTATIC  
SENSITIVE  
DEVICES

**PEAK**

D180 P9043 W16/2.4

180 ± 2

3 REF

3 REF

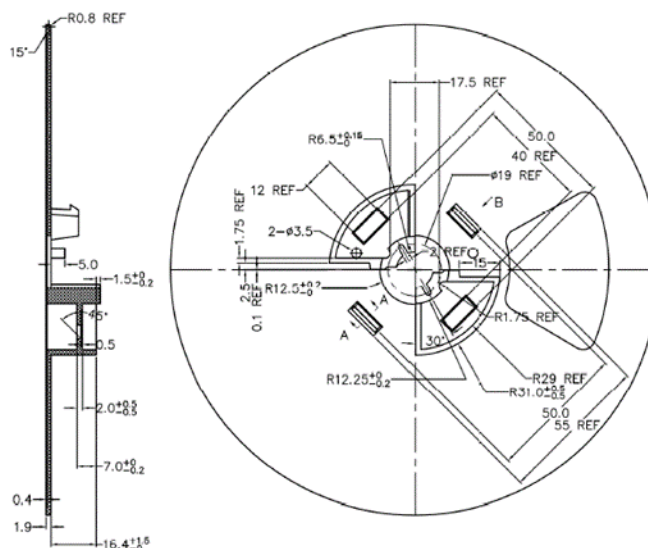
60°

R71 REF

R34 REF

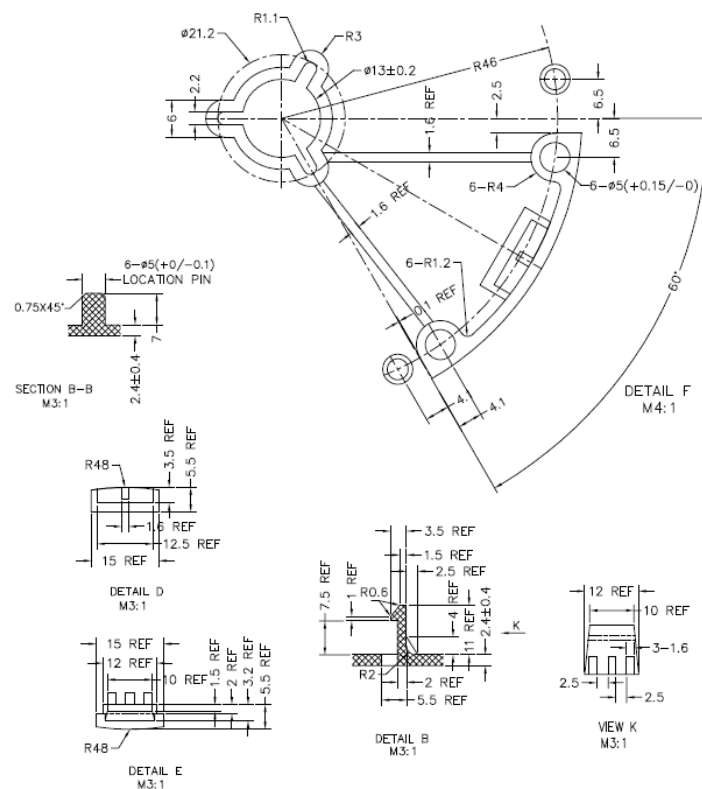
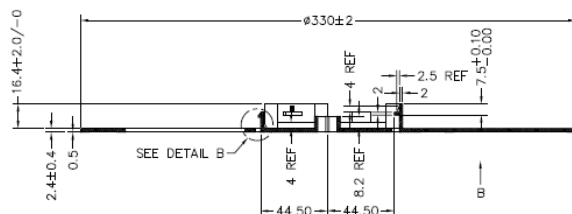
R6 REF

45°



Technical drawing of a circular machine component, likely a fan or impeller, showing five radial arms and five trapezoidal blades. The drawing includes dimension lines and callouts:

- Dimension: 44.50 (indicated twice, representing the radius).
- Dimension:  $\phi 100 \pm 2.0$  (indicating the hole diameter).
- Callouts: A, B, C (pointing to specific features on the arms and blades).
- References: SEE DETAIL D, SEE DETAIL E, SEE DETAIL F (pointing to specific features on the arms and blades).



### 13. Ordering Information

Part Number	Operating Temperature Grade	Storage Temperature Range	Package	MSL Rating	Packing (Tape & Reel)
NV6127	-40 °C to +125 °C T <sub>CASE</sub>	-55 °C to +150 °C T <sub>CASE</sub>	6 x 8 mm QFN	3	1,000 : 7" Reel 5,000 : 13" Reel

### 14. Revision History

Date	Status	Notes
Jul 18, 2019	Preliminary	First publication
Nov 22, 2019	Initial release	Added Section 8.10, updated Section 8.3 and figure 22

### Additional Information

DISCLAIMER Navitas Semiconductor Inc. (Navitas) reserves the right to modify the products and/or specifications described herein at any time and at Navitas' sole discretion. All information in this document, including descriptions of product features and performance, is subject to change without notice. Performance specifications and the operating parameters of the described products are determined in the independent state and are not guaranteed to perform the same way when installed in customer products. The information contained herein is provided without representation or warranty of any kind, whether express or implied. This document is presented only as a guide and does not convey any license under intellectual property rights of Navitas or any third parties.

Navitas' products are not intended for use in applications involving extreme environmental conditions or in life support systems.

Products supplied under Navitas [Terms and Conditions](#).

Navitas Semiconductor, Navitas, GaNFast and associated logos are registered trademarks of Navitas.

Copyright ©2019 Navitas Semiconductor Inc. All rights reserved



Navitas Semiconductor Inc., 2101 E El Segundo Blvd, Suite 205, El Segundo, California 90245, USA.

Contact [info@navitassemi.com](mailto:info@navitassemi.com)